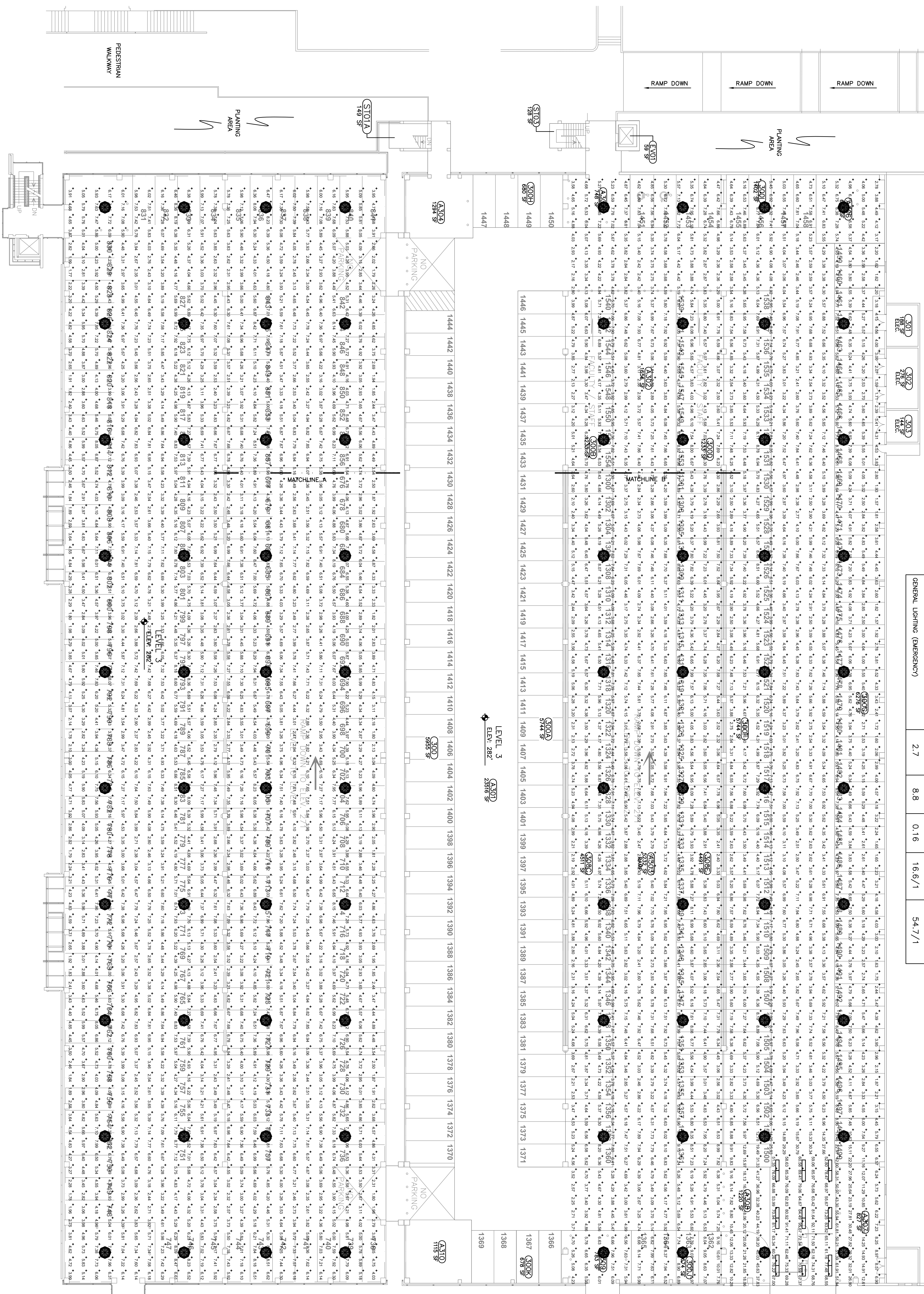


LEVEL 3 PHOTOMETRIC SUMMARY

SECTION A					
	AVERAGE (fc)	MAX (fc)	MIN (fc)	AVG./MIN (fc)	MAX./MIN (fc)
GENERAL LIGHTING (NORMAL)	5.2	12.3	1.6	3.3/1	7.9/1
GENERAL LIGHTING (EMERGENCY)	2.7	8.5	0.16	16.7/1	53.2/1
ENTRANCE LIGHTING (NORMAL DAYTIME)	71.3	95.7	51.4	1.4/1	1.9/1

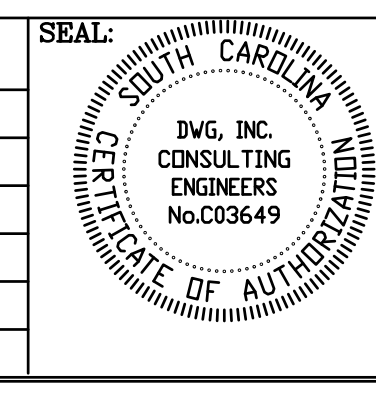
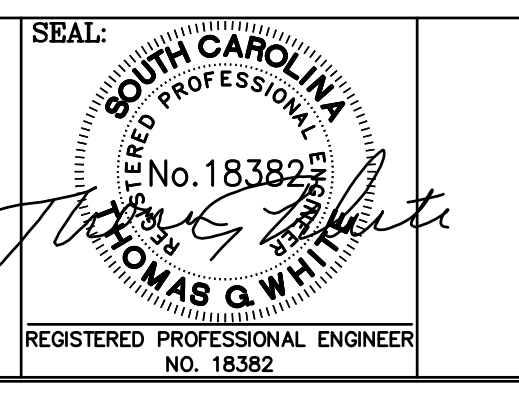
  

SECTION B					
	AVERAGE (fc)	MAX (fc)	MIN (fc)	AVG./MIN (fc)	MAX./MIN (fc)
GENERAL LIGHTING (NORMAL)	5.2	8.9	1.8	2.9/1	5.0/1
GENERAL LIGHTING (EMERGENCY)	2.7	8.8	0.16	16.6/1	54.7/1



PHOTOMETRIC LAYOUT  
LEVEL 3 - BULL STREET PARKING GARAGE  
1  
E3.5  
1/16" = 1'-0"

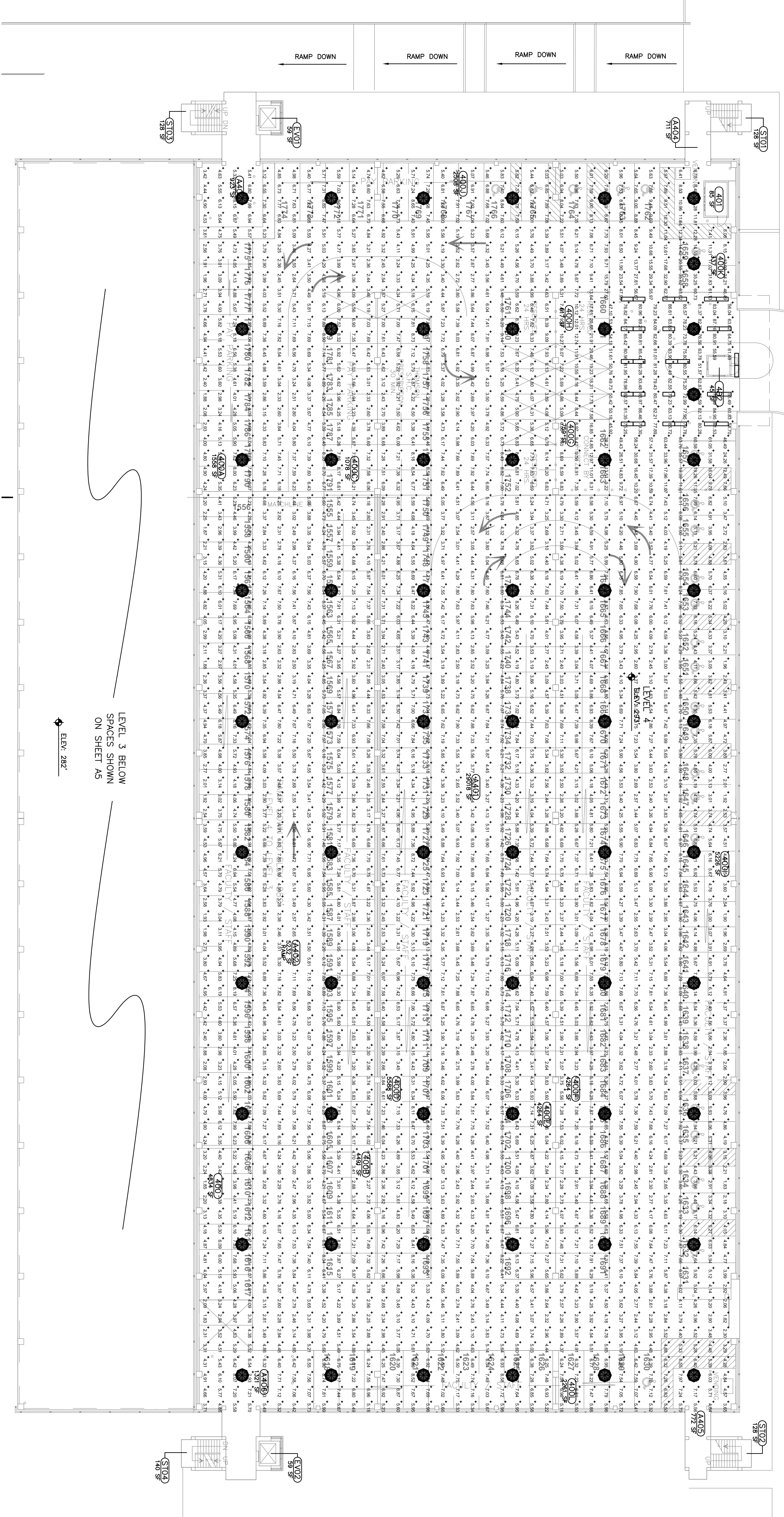
CAMPUS PLANNING AND CONSTRUCTION  
COLUMBIA, SC 29208



PROJECT TITLE	BULL STREET GARAGE LIGHTING RETROFIT H27-Z042
BUILDING	170/170A
DRAWING	E3.5
DATE	01/31/2013
DRAWN BY	TGW
CHECKED BY	TGW
SEAL	
REV.	
DESCRIPTION	

PHOTOMETRIC LAYOUT - LEVEL 3  
University of South Carolina

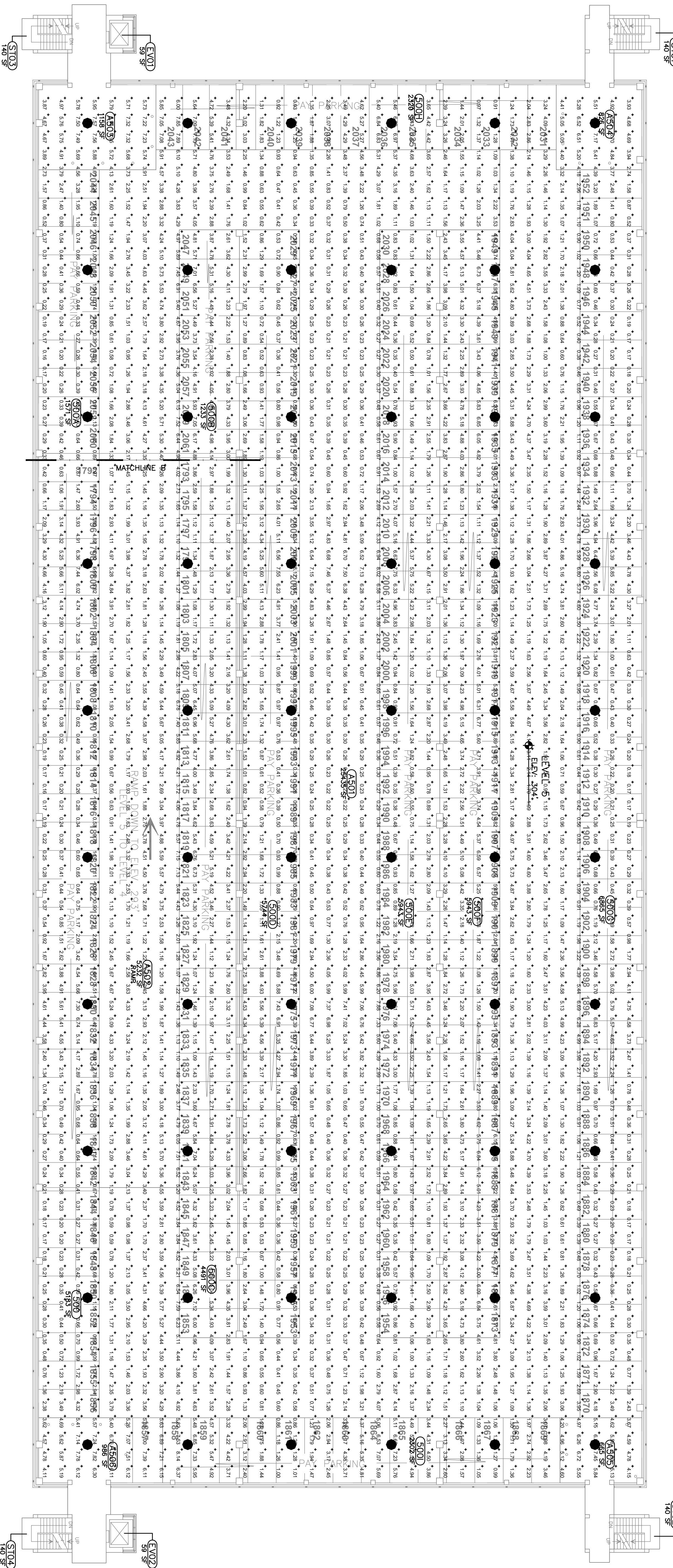




PHOTOMETRIC LAYOUT  
 LEVEL 4 - BULL STREET PARKING GARAGE  
 E3.6  
 1/16" = 1'-0"

LEVEL 4 PHOTOMETRIC SUMMARY				
SECTION A				
	AVERAGE (f/c)	MAX (f/c)	MIN (f/c)	AVG/MIN MAX/MIN
GENERAL LIGHTING (NORMAL)	5.4	14.4	1.8	3.0/1 8.0/1
GENERAL LIGHTING (EMERGENCY)	2.6	8.3	0.16	15.9/1 51.6/1
ENTRANCE LIGHTING (NORMAL DAYTIME)	76.4	91.3	50.8	1.5/1 1.8/1
SECTION B				
	AVERAGE (f/c)	MAX (f/c)	MIN (f/c)	AVG/MIN MAX/MIN
GENERAL LIGHTING (NORMAL)	5.2	8.6	1.8	2.9/1 4.9/1
GENERAL LIGHTING (EMERGENCY)	2.4	8.1	0.16	15.2/1 50.9/1

LEVEL 5 PHOTOMETRIC SUMMARY				
AVERAGE (fc)	MAX (fc)	MIN (fc)	AVG/FIN	MAX/FIN (fc)
5.3	9.0	1.8	2.9/1	4.9/1
GENERAL LIGHTING (NORMAL)				
2.4	8.1	0.16	15.2/1	50.9/1
GENERAL LIGHTING (EMERGENCY)				



1 PHOTOMETRIC LAYOUT  
LEVEL 5 - BULL STREET PARKING GARAGE  
E3.7 1/16" = 1'-0"

<p>PHOTOMETRIC LAYOUT - LEVEL 5 University of South Carolina</p>	PROJECT TITLE: BULL STREET GARAGE LIGHTING RETROFIT H27-Z042 SHEET: E3.7 24 OF 24 N/A ORN/A	BUILDING: 170/170A DRAWING: E3.7 DATE: 01/31/2013 DRAWN BY: TGW CHECKED BY: TGW	SEAL: SOUTH CAROLINA PROFESSIONAL ENGINEERS ING. INC. CONSULTING ENGINEERS NO. 18382 THOMAS A. WHITE REGISTERED PROFESSIONAL ENGINEER NO. 18382	CAMPUS PLANNING AND CONSTRUCTION COLUMBIA, SC 29208
	REV.	DESCRIPTION	DATE	ORIG. BY